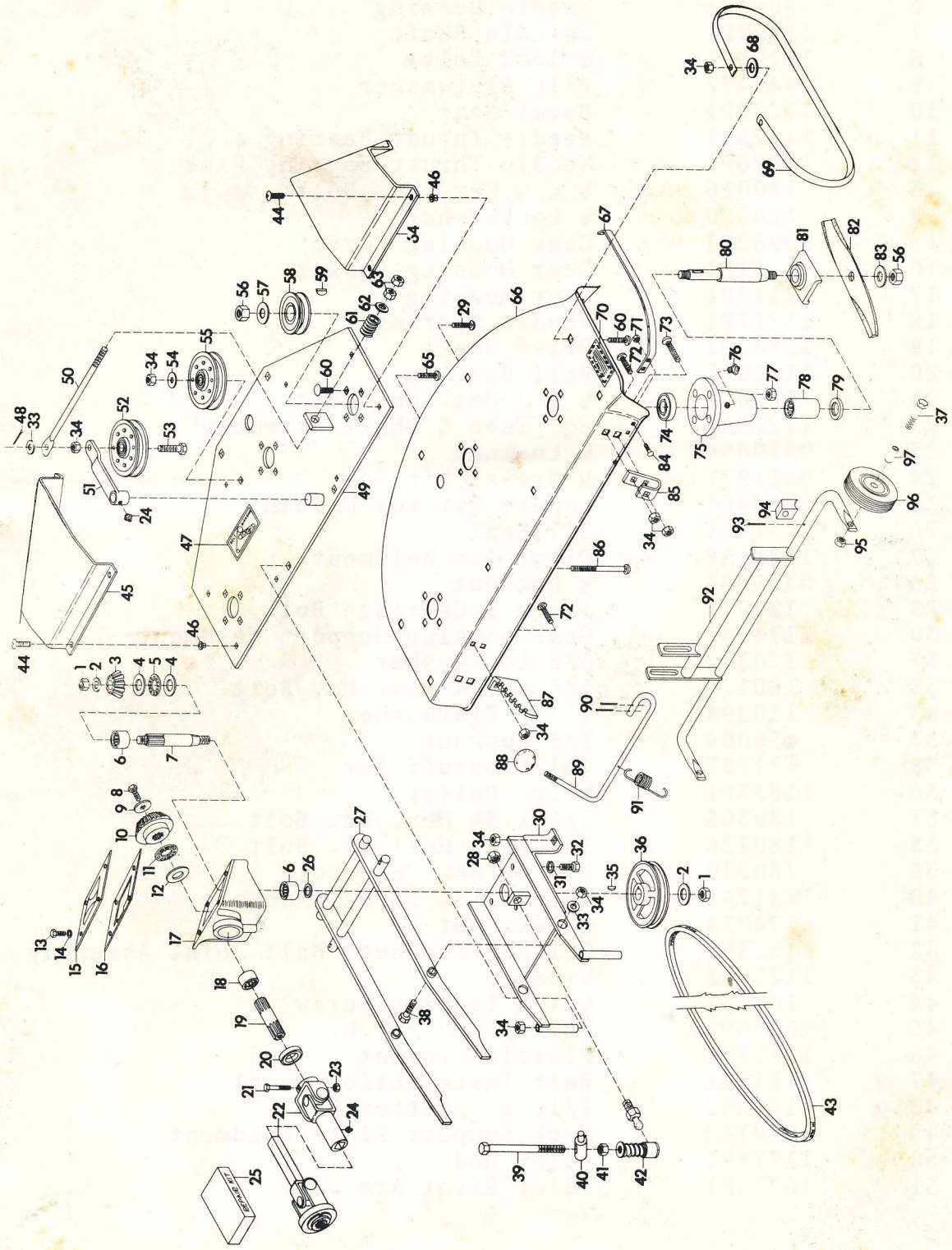


## ILLUSTRATED PARTS LIST

To continue its program of quality and design improvement, the manufacturer reserves the right to change specifications, design or prices without notice and without incurring obligation.

## 50" ROTARY MOWER

Model Number MA - 605  
Effective Date October 1, 1968  
Form Number 14 380 P 1



<u>ITEM NO.</u>	<u>PART NO.</u>	<u>DESCRIPTION</u>
1	11835P1	½ Locknut
2	9417098	17/32 Flatwasher
3	11831P1	Bevel Pinion
4	11224P1	Needle Thrust Bearing Race
5	11222P1	Needle Thrust Bearing
6	9660P1	Needle Bearing
7	11832P1	Spindle Shaft
8	11196P1	Nylock Bolt
9	446477	7/16 Flatwasher
10	11220P1	Bevel Gear
11	11225P1	Needle Thrust Bearing
12	11226P1	Needle Thrust Bearing Race
13	180016	¼ x ½ Hex. Hd. Bolt
14	120380	¼ Lockwasher
15	10982P1	Gear Housing Cover
16	11231P1	Gear Housing Gasket
17	12114P1	Gear Housing
18	11227P1	Needle Bearing
19	11840P1	Drive Shaft
20	11293P1	Ball Bearing
21	180044	¼ x 2 Hex. Hd. Bolt
22	11215A1	Sq. Tube & Shaft Assembly
23	9419454	¼ Locknut
24	9411027	¼ Grease Fitting
25	12134P1	Repair Kit for U-Joint
26	11324P1	Oil Seal
27	11251A2	Pivot Arm Weldment
28	9415993	½ Locknut
29	120915	3/8 x 1 Carriage Bolt
30	11239A2	Gear Housing Support Weldment
31	120382	3/8 Lockwasher
32	180120	3/8 x 3/4 Hex. Hd. Bolt
33	120394	13/32 Flatwasher
34	456004	3/8 Locknut
35	431787	#61 Woodruff Key
36	11833P1	Drive Pulley
37	189305	3/8 x 3½ Hex. Hd. Bolt
38	180126	3/8 x 1½ Hex. Hd. Bolt
39	189349	½ x 5¼ Hex. Hd. Bolt
40	11317A1	Mower Lift Pivot Assembly
41	124934	½ Hex. Nut
42	11315P1	Quick Disconnect Ball Joint Assembly
43	11216P1	V-Belt
44	167257	¼ x ½ Tapping Screw
45	10995P2	Pulley Cover L.H.
46	11777P1	Plastic Grommet
47	11715P1	Belt Installation Decal
48	179252	1/16 x 1 Cotter Pin
49	10991A2	Deck Support Plate Weldment
50	11778P1	Idler Rod
51	10992P1	Idler Pivot Arm

<u>ITEM NO.</u>	<u>PART NO.</u>	<u>DESCRIPTION</u>
52	11255P1	Idler Sheave
53	11313P1	Drilled Bolt
54	120388	7/16 Flatwasher
55	11316P1	Idler Sheave
56	12412P1	5/8 Locknut
57	131016	21/32 Flatwasher
58	10988P1	Spindle Sheave
59	124549	#9 Woodruff Key
60	126402	3/8 x 1 1/4 Carriage Bolt
61	11779P1	Spring
62	120395	15/32 Flatwasher
63	271501	7/16 Hex. Nut
64	10994P2	Pulley Cover R. H.
65	126411	3/8 x 1 1/2 Carriage Bolt
66	10968A3	Deck Weldment
67	11267P1	Safety Shield
68	120390	9/16 Flatwasher
69	11938P1	Skid
70	11238P1	Safety Decal
71	190254	#10 Locknut
72	126227	3/8 x 3/4 Carriage Bolt
73	126416	3/8 x 1 3/4 Carriage Bolt
74	11641P1	Ball Bearing
75	10984P1	Bearing Housing
76	127800	1/8 Lube Fitting
77	456004	3/8 Locknut
78	11235P1	Needle Bearing
79	11229P1	Oil Seal
80	11232P1	Bearing Housing Shaft
81	10986P1	Blade Cradle
82	11234P1	Blade
83	446502	5/8 Flatwasher
84	126193	#10 x 5/8 Carriage Bolt
85	11264P1	Axle Support Bracket
86	126729	3/8 x 4 1/2 Carriage Bolt
87	11265P1	Height Adj. Bracket
88	11261P1	Adj. Control Knob
89	10993P1	Height Adj. Lever
90	120123	1/8 x 1 1/4 Cotter Pin
91	11268P2	Spring
92	11243A2	Axle Pivot Weldment
93	103386	1/8 x 1 1/4 Cotter Pin
94	11260P1	Nylon Stop
95	124829	3/8 Hex. Nut
96	11386P1	Wheel
97	11937P1	Bushing